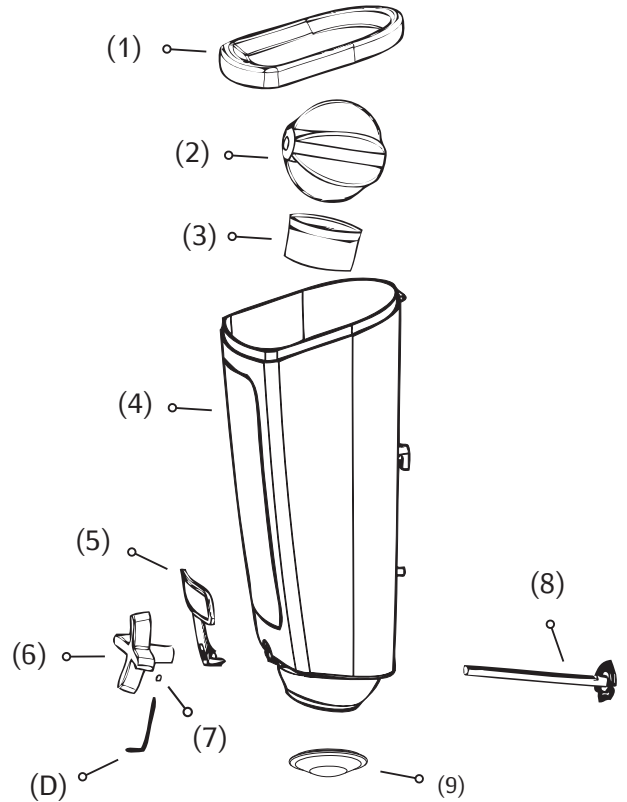


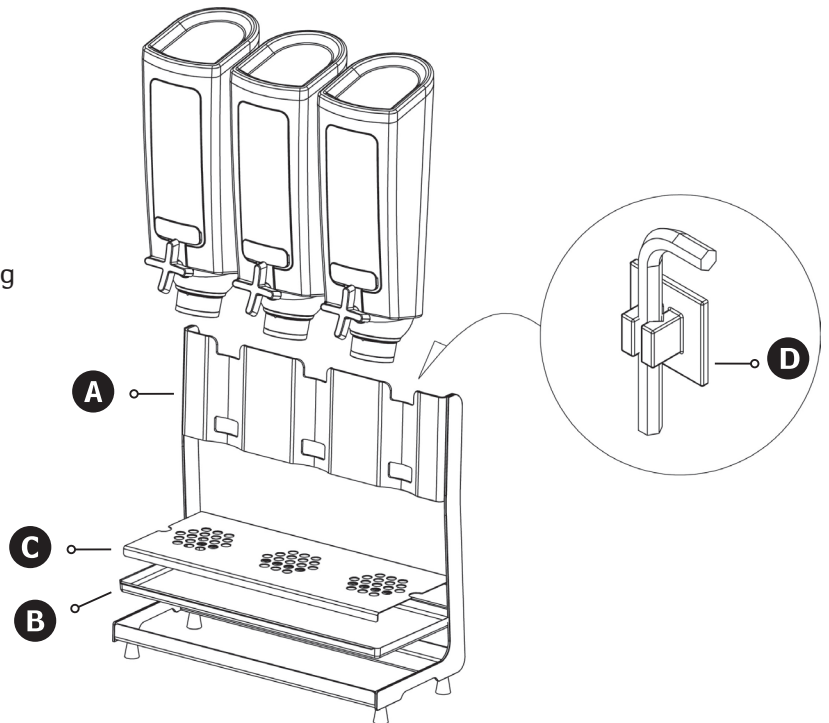
## Assembly Instructions for EZPRO 2/3/5 Unit

1. Carefully remove all parts from packaging:

- 1-PRO Stand **(A)**
- 1-PRO Base **(B)**
- 1-PRO Tray **(C)**
- 1.5mm Allen Wrench **(D)**
- 2, 3 or 5 PRO Containers
  - I. Pro Lid, Stainless Steel (1)
  - II. 6WR PRO Silicon Paddle Wheel (2)
  - III. Regular Nozzle (3)
  - IV. Container (4)
  - V. Name Tag (5)
  - VI. PRO Handle (6)
  - VII. Mini 1.5mm Screw for Handle (7)
  - VIII. Plastic Pin (8)
  - XI. Pro Fresh Lid (9)



2. Remove all PRO Containers (4) from individual packaging and foam protection
3. Remove all PRO Lids (1) from cardboard insert before discarding container packaging
4. Insert back of container onto PRO Stand (A), making sure it locks into place and the container is secure
5. Repeat Step 4 for the remaining containers
6. Place PRO Tray (C) on PRO Base (B)
7. Place PRO Base (B) on PRO Stand (A)
8. Fill containers with desired dry product
9. Place all lids on each corresponding container
10. Dispense as you please!



### \* IMPORTANT NOTE, PLEASE READ:

Make sure to use long side of Allen wrench to tighten screw. When tightening screw, turn handle so screw hole is facing the bottom of container towards nozzle for easy access.

# CLEANING INSTRUCTIONS

1. Gently disassemble all parts of unit as indicated below

2. Wash all parts in warm soapy water (never use abrasive sponge or cloth)

3. Reassemble unit only after all parts are completely dry (see assembly instructions >>)

## PRO Container Disassembly

- 1) Carefully remove PRO Container (4) from PRO Stand (A)
- 2) Remove PRO Lid (1) from top of Container
- 3) Loosen mini 1.5mm screw for handle (7) found on side of PRO Handle (6) until handle is free utilizing 1.5mm Allen Wrench (D) (Do Not Remove Screw)\*
- 4) Gently remove PRO Handle from the Plastic Pin (8) along with Name Tag (5) from front of Container
- 5) Gently push Plastic Pin from front of Container with thumb until there is enough space on the back side to pull Plastic Pin out
- 6) Remove Plastic Pin from the back of the Container, leaving 6WR PRO Silicon Paddle Wheel (2) free-standing inside Container
- 7) Reach into Container and remove Paddle Wheel by gently pulling upwards
- 8) Again reach into Container and remove Nozzle (3) from the inside of Container

### \* IMPORTANT NOTE, PLEASE READ:

Make sure to use long side of Allen wrench to tighten screw. When tightening screw, turn handle so screw hole is facing the bottom of container towards nozzle for easy access.

## PRO Container Assembly

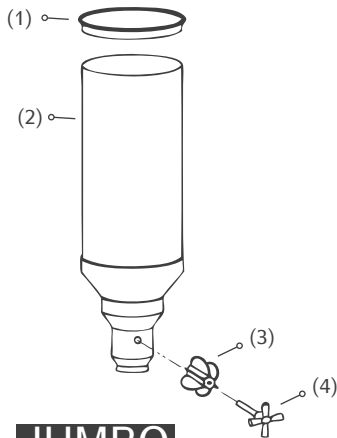
- 1) Place Nozzle (3) into bottom of PRO Container (4), narrow part first so it catches on bottom of Container and clicks into place
- 2) Place 6WR PRO Silicon Paddle Wheel (2) into Container, making sure the holes of the paddle wheel align with the container's holes
- 3) Insert Plastic Pin (8) through back of Container, through the Paddle Wheel, until it securely fits onto the back of the Container, with the Plastic Pin coming out on the front side of the Container (make sure back of Plastic Pin fits properly onto back of Container)
- 4) If desired, place Name Tag (5) on front side of Container through the Plastic Pin until it fits snugly to front of Container
- 5) Next, Insert PRO Handle (6) into Plastic Pin so the holes from the Handle and Plastic Pin are aligned
- 6) Tighten mini 1.5 mm screw for handle (7) with 1.55 mm Allen Wrench (D) until Handle is secure, making sure screw goes into Hinge as well\*
- 7) Fill Container with desired dry product and place PRO Lid (1) on Container
- 8) Carefully insert back of Container onto PRO Stand (A), making sure it locks into place and container is secure

## NEED ASSISTANCE?

Please contact our customer support at (847)763-1215 and we'll be happy to assist with any assembly questions, comments or concerns.

ROSSETO® 3600 W. Pratt Avenue. Lincolnwood, IL 60712

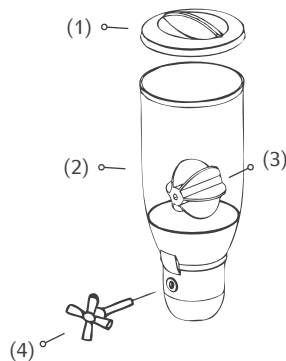
# Spare Parts Guide



## JUMBO

- EZL003 - Metal Lid (1)
- Ezc003 - 3.5 gal Jumbo Container (2) or Ezc004 - 4.0 gal Jumbo Container
- EZP003 - 6 wing Paddle Wheel (3)
- EZH003 - Metal Handle (4)

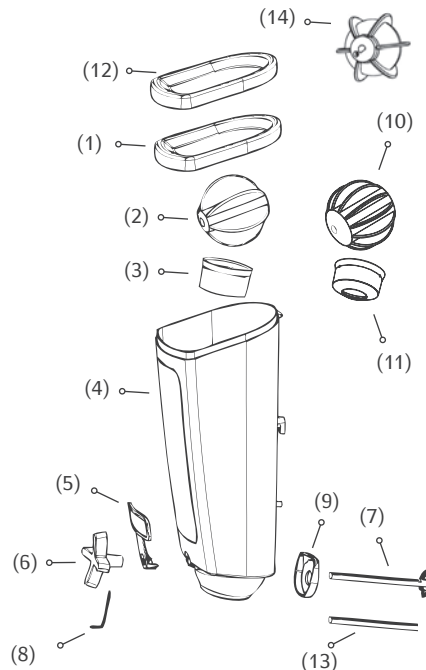
\* Applicable to EZServ: 01/04 Jumbo models



## ROUND

- EZL001 - Plastic Lid (1)
- Ezc001 - 0.9 gal Container (2)
- EZP003 - 6 Wing Paddle Wheel (3)
- EZH003 - Metal Handle (4)

\*Applicable to EZServ:  
301/302/303/304/307 models



## PRO

- EZL006 - PRO Lid, Stainless Steel (1)
- EZP004 - Pro 6 wing Paddle Wheel (2)
- EZM005 - Regular Nozzle(3)
- Ezc008 - Container (4)
- EZM006 - Name Tag (5)
- EZH004 - Metal Handle & Pin (6 & 7)
- EZM019 - 1.5mm tool (8)
- EZM003 - Clicking Mechanism (9)
- EZP005 - Pro 12 wing Paddle Wheel (10)
- EZM004 - Narrow Nozzle (11)
- EZL009 - Plastic lid (12)
- EZM025 - Pin only (13)
- PRO6-SM -Pro 1 Tbs. wheel (14)
- EZM027 - Stand for container - SS



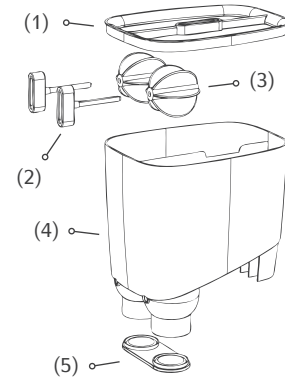
## TOPPING KIT

EZP001 -  
12 wing paddle wheel ≈ 1 tbs. per servings (1)



EZH002 -  
Chrome handle (2)

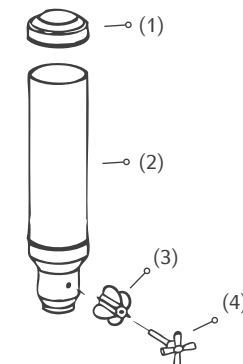
EZH005 -  
S - Shaped handle



## DIVIDED

- EZL004 - Black Lid (1) or EZL005 - White Lid
- EZH002 - Chrome Handle (2) or EZH001 - White Handle
- EZP002 - 6 wing Paddle Wheel (3)
- Ezc005 - 2.2 gal Container (4)
- EZL008 - Black Fresh Lid (5) or EZL007 - White Fresh Lid

\* Applicable to EZServ:  
100M/200M/1800/3600/5400/7200 models



## TALL

- EZL002 - Plastic Lid (1)
- Ezc002 - 1.3 gal Container (2)
- EZP003 - 6 Wing Paddle Wheel (3)
- EZH003 - Metal Handle (4)

\* Applicable to EZServ:  
02/03/05 & H30/50 models